



Jui Ming Metal Industrial Co., Ltd.

IDF UNION FITTINGS

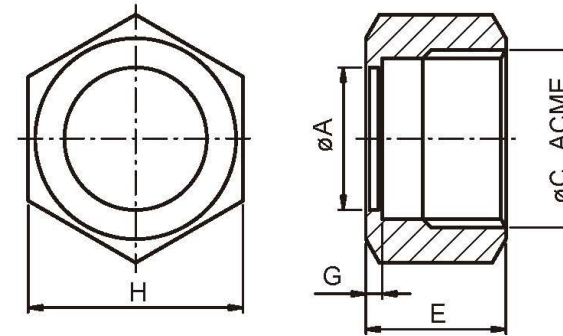


- Standards: BS 4825 Part 4.
- Applications: For the Food, Beverage, and other Hygiene Industry
- Working Pressures: Normal operating at pressures up to 16 Bar.
- Materials:
 - Round slotted Nut-----TP-304
 - Hex. Nut-----TP-304
 - Expanding Liner-----TP-304, 316, 316L
 - Expanding Male part-----TP-304, 316, 316L
 - Welding Liner-----TP-304, 316, 316L
 - Welding Male part-----TP-304, 316, 316L
 - Blank Round Nut-----TP-304, 316, 316L
 - Blank Hex. Nut-----TP-304, 316, 316L
 - Blank Liner-----TP-304, 316, 316L
 - Seal----EPDM, Silicone, Buna-N, Viton.
- Surface Finished: Ra Max 0.8um.
- Size range: 1"-----4"

IDF UNION FITTINGS

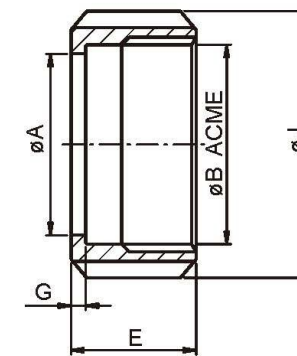


IDF-13H 六角螺帽 IDF HEXAGONAL NUT



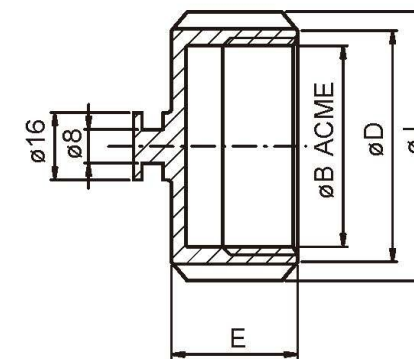
SIZE	A	C	E	G	H
1"	30.5	38.02*1/8T	30	3.5	46
1 1/2"	43.5	51.54*1/8T	30	3.5	60
2"	57	65.05*1/8T	30	3.5	75
2 1/2"	70.7	78.56*1/8T	30	3.5	90
3"	83.3	92.08*1/8T	30	3.5	105
4"	112	126.79*1/6T	35	4.7	133

IDF-13R 圓螺帽 IDF ROUND SLOTTED NUT



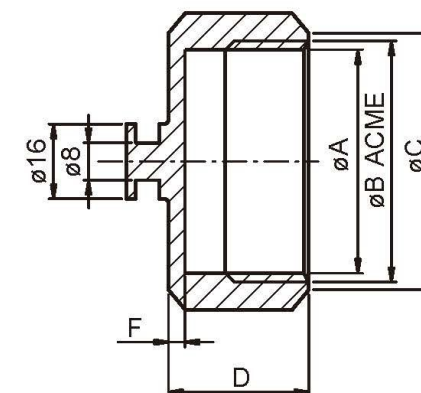
SIZE	A	B	E	G	J
1"	30.5	34.34*8T	30	3.5	48
1 1/2"	43.5	47.86*8T	30	3.5	64
2"	57	61.37*8T	30	3.5	77
2 1/2"	70.7	74.88*8T	30	3.5	91
3"	83.3	88.40*8T	30	3.5	106
4"	112.0	122.05*6T	35	4.7	142

IDF-13RH 圓形盲螺帽 IDF BLANK ROUND NUT



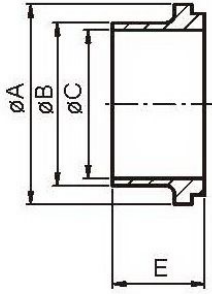
SIZE	B	D	E	J
1"	34.34*8T	41	30	48
1 1/2"	47.86*8T	55	30	64
2"	61.37*8T	68	30	77
2 1/2"	74.88*8T	82	30	91
3"	88.40*8T	97	30	106
4"	122.05*6T	130	35	142

IDF-13AH 六角盲螺帽 IDF BLANK HEX NUT



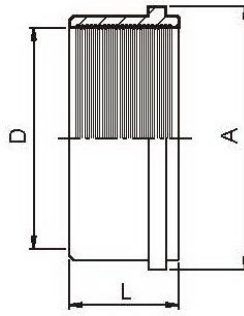
SIZE	A	B	C	D	F
1"	34.34	38.02	43	30	3.5
1 1/2"	47.86	51.54	57.8	30	3.5
2"	61.37	65.05	72.8	30	3.5
2 1/2"	74.88	78.56	87.6	30	3.5
3"	88.40	92.08	103.1	30	3.5
4"	122	126.79	128	35	4.7

IDF UNION FITTINGS



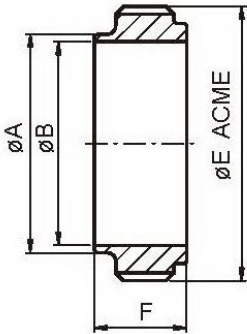
IDF-14 無牙接頭
IDF WELD LINER

SIZE	A	B	C	E
1"	33.8	25.65	22.2	21.5
1 1/2"	47	38.35	34.9	21.5
2"	60.5	51.05	47.6	21.5
2 1/2"	74	63.75	60.3	21.5
3"	87.5	76.45	73	21.5
4"	120.6	101.85	97.6	30



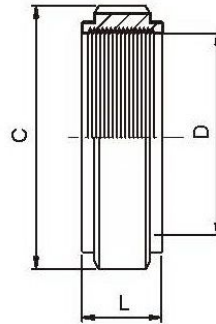
IDF-14R 擴管平接頭
IDF EXPANDING LINER

SIZE	A	D	L
1"	33.8	25.5	20
1 1/2"	47.0	38.2	20
2"	60.5	50.9	25
2 1/2"	74.0	63.6	30
3"	87.5	76.3	30
4"	120.7	101.7	30



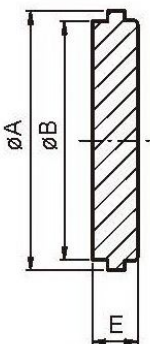
IDF-15 有牙接頭
IDF WELD MALE

SIZE	A	B	E	F
1"	25.65	22.2	37.13*1/8	21.5
1 1/2"	38.35	34.9	50.65*1/8	21.5
2"	51.05	47.6	64.16*1/8	21.5
2 1/2"	63.75	60.3	77.67*1/8	21.5
3"	76.45	73	91.19*1/8	21.5
4"	101.85	97.6	125.9*1/6	30



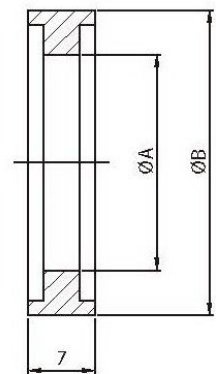
IDF-15R 擴管牙接頭
IDF-EXPANDING MALE

SIZE	C	D	L
1"	37.1*8TACME	25.5	16.5
1 1/2"	50.6*8TACME	38.2	19.5
2"	64.1*8TACME	50.9	19.5
2 1/2"	77.6*8TACME	63.6	25.0
3"	91.1*8TACME	76.3	30.0
4"	125.9*6TACME	101.7	35.0



IDF-14AH 盲板
IDF BLANK LINER

SIZE	A	B	E
1"	33.8	29.5	10.5
1 1/2"	47	42.5	10.5
2"	60.5	55.7	10.5
2 1/2"	74	68.8	10.5
3"	87.5	81.9	10.5
4"	120.6	111	12.6



IDF 墊片(H型)
IDF SEAL RING

SIZE	øA	øB
1"	23	32.5
1.5"	36	46
2"	49	59.5
2.5"	60.7	73.2
3"	73.2	86.5
R 4"	98	113
H 4"	98	119.6